



Procurement Office
675 West Main Street
Rochester, NY 14611
585-697-3625
Fax: 585-697-7164
WWW.ROCHESTERHOUSING.ORG

July 9, 2014 2014

To: Contractors

RE: Rochester Housing Authority,
Atkinson Court –Site Improvements
5 pages including cover

ADDENDUM #1

See Attached

Acknowledgement:

I have received the above referenced Addendum #1 and have used it in the calculation/preparation of this bid.

Contractor

THIS MUST BE SUBMITTED WITH YOUR BID SUBMISSION
FAILURE TO DO SO MAY RENDER YOUR BID INVALID.

**Rochester Housing Authority
Atkinson Site Improvement Project
HUNT 2285-017**

ADDENDUM No. 1

Date: July 8, 2014

The following Addendum (Addenda) shall be considered a part of the contract documents prepared by HUNT ENGINEERS, ARCHITECTS & LAND SURVEYORS, P.C. dated **June 10, 2014**.

Drawings Issued by this Addendum:

**CA-L1 – SITE LAYOUT POINTS
CA-L2 – E&S AND GRADING ADDENDA**

Project Manual Sections Issued by this Addendum:

None

Revisions to Project Manual:

None

Revisions to Project Drawings:

Item AD 1-1 Refer to Drawing C1.1 – “SITE DEMOLITION PLAN”

Add note #27 to read “If water lines are installed within 10 feet of a sewer line, both pipes are to be encased in flowable fill.”

Add note #28 to read “Where existing privacy walls are removed, the trim board to which they were attached to is to be replaced in kind and painted to match adjacent trim.”

Item AD 1-2 Refer to Drawing C2.1 – “SITE IMPROVEMENT PLAN”

Revise detail #4 - “CONCRETE DRIVE AND PAD DETAIL” to show a minimum concrete depth of 8 inches.

Item AD 1-3 Refer to Drawing C2.2 – “SITE LAYOUT PLAN”

Add site layout points as shown on drawing CA-L1 included with this addendum.

Add site layout point table as shown on Page 2 of this addendum.

Item AD 1-4 Refer to Drawing C3.1 – “Grading and E&S Plan”

Revise location of construction entrance as shown on drawing CA-L2 issued with this addendum.

Add note reflecting that the contractor is to provide topsoil to raise the grade around an existing catch basin on the western side of the site, as shown on drawing CA-L2 issued with this addendum.

Item AD 1-5 Refer to Drawing C3.1 – “E&S NOTE AND DETAILS”

Remove section V. INFILTRATION BASIN NOTES from the E&S notes.

Item AD 1-6 Refer to Drawing C4.1 – “SITE UTILITY PLAN”

Revise note #18 to read “Connect to existing water line using welded joints if copper or dielectric union if galvanized.”

Item AD 1-7 Refer to Drawing C6.1 – “SITE DETAILS”

Add note to Detail #1 – “Concrete Walk Detail” to read “Contractor may provide saw cutting with edges finishing from a 1/4” chamfer grinder as an alternate to tooled window pane finishing.”

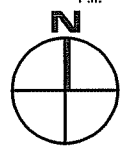
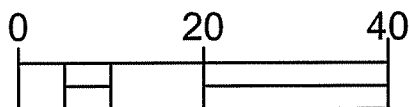
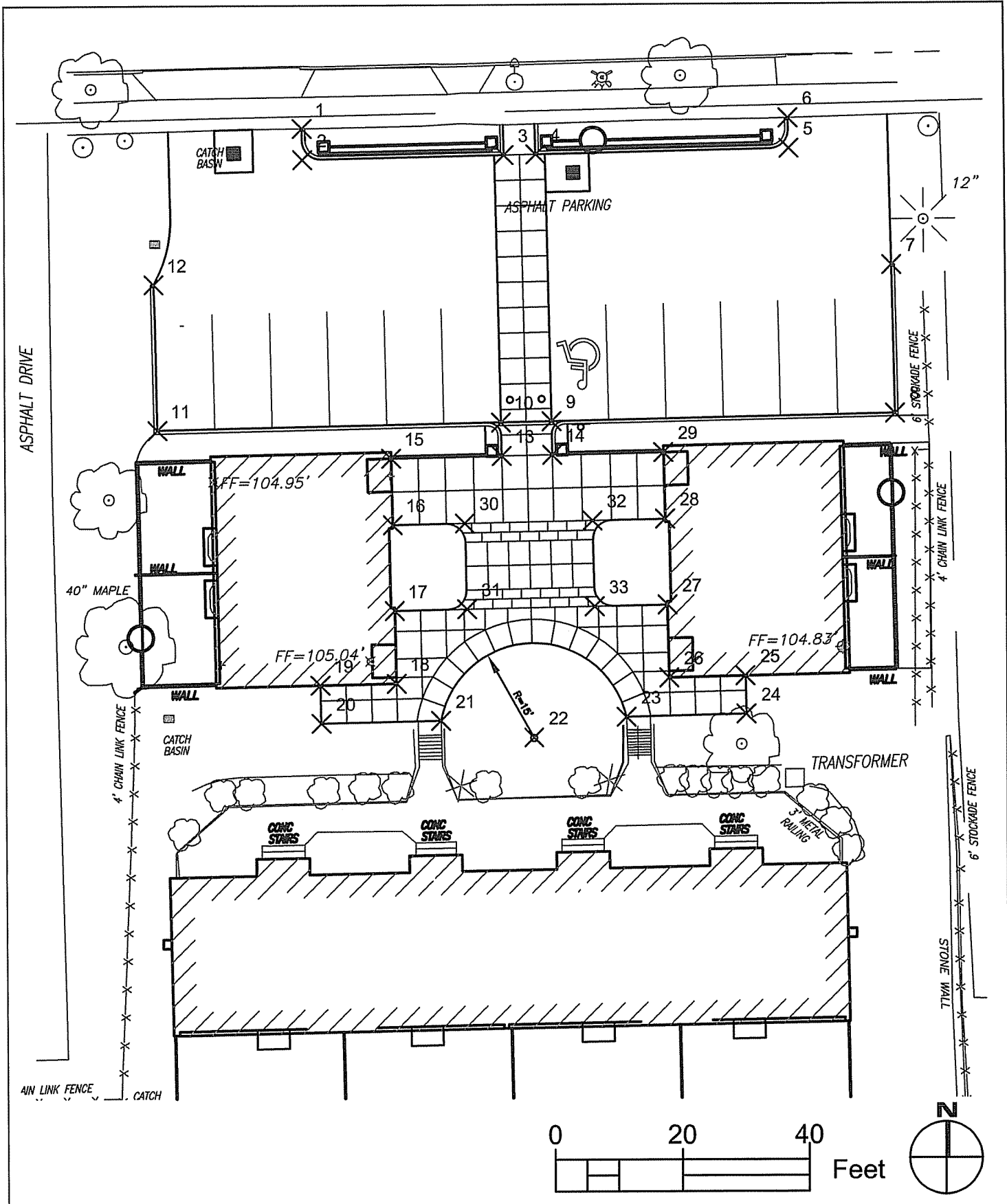
Add note to Details #7, #8 and #9 to read “All rails to be 4” dia steel tube, with a minimum of 2 coats black powder coating.”

Item AD 1-8 Refer to Drawing C7.1 – “DECK PLANS & DETAILS”

Revise Detail #1 “Deck Framing Plans” to reflect a joist spacing of 12” O.C. in lieu of the 16” O.C. specified.

Site Layout Point Table:

#	NORTHING	EASTING	DESCRIPTION
1	1406285.744	1149146.948	CURB LAYOUT POINT
2	1406285.8	1149142.059	CURB LAYOUT POINT
3	1406317.56	1149142.689	CURB LAYOUT POINT
4	1406322.559	1149142.788	CURB LAYOUT POINT
5	1406362.41	1149143.579	CURB LAYOUT POINT
6	1406362.295	1149148.351	CURB LAYOUT POINT
7	1406378.419	1149125.199	CURB LAYOUT POINT
8	1406378.881	1149101.897	CURB LAYOUT POINT
9	1406324.892	1149100.826	CURB LAYOUT POINT
10	1406316.893	1149100.667	CURB LAYOUT POINT
11	1406262.904	1149099.596	CURB LAYOUT POINT
12	1406262.376	1149122.476	CURB LAYOUT POINT
13	1406317.001	1149095.404	CURB LAYOUT POINT
14	1406324.981	1149095.563	CURB LAYOUT POINT
15	1406299.543	1149095.055	CURB LAYOUT POINT
16	1406299.759	1149084.599	CURB LAYOUT POINT
17	1406300.026	1149071.097	SW LAYOUT POINT
18	1406300.273	1149059.645	SW LAYOUT POINT
19	1406288.276	1149059.397	SW LAYOUT POINT
20	1406288.4	1149053.399	SW LAYOUT POINT
21	1406307.244	1149053.787	SW LAYOUT POINT
22	1406321.92	1149051.109	SW LAYOUT POINT
23	1406336.49	1149054.302	SW LAYOUT POINT
24	1406355.342	1149054.718	SW LAYOUT POINT
25	1406355.21	1149060.717	SW LAYOUT POINT
26	1406343.213	1149060.452	SW LAYOUT POINT
27	1406342.985	1149071.916	SW LAYOUT POINT
28	1406342.663	1149085.416	SW LAYOUT POINT
29	1406342.431	1149095.872	SW LAYOUT POINT
30	1406311.156	1149084.834	SW LAYOUT POINT
31	1406311.435	1149071.323	SW LAYOUT POINT
32	1406331.264	1149085.19	SW LAYOUT POINT
33	1406331.562	1149071.689	SW LAYOUT POINT

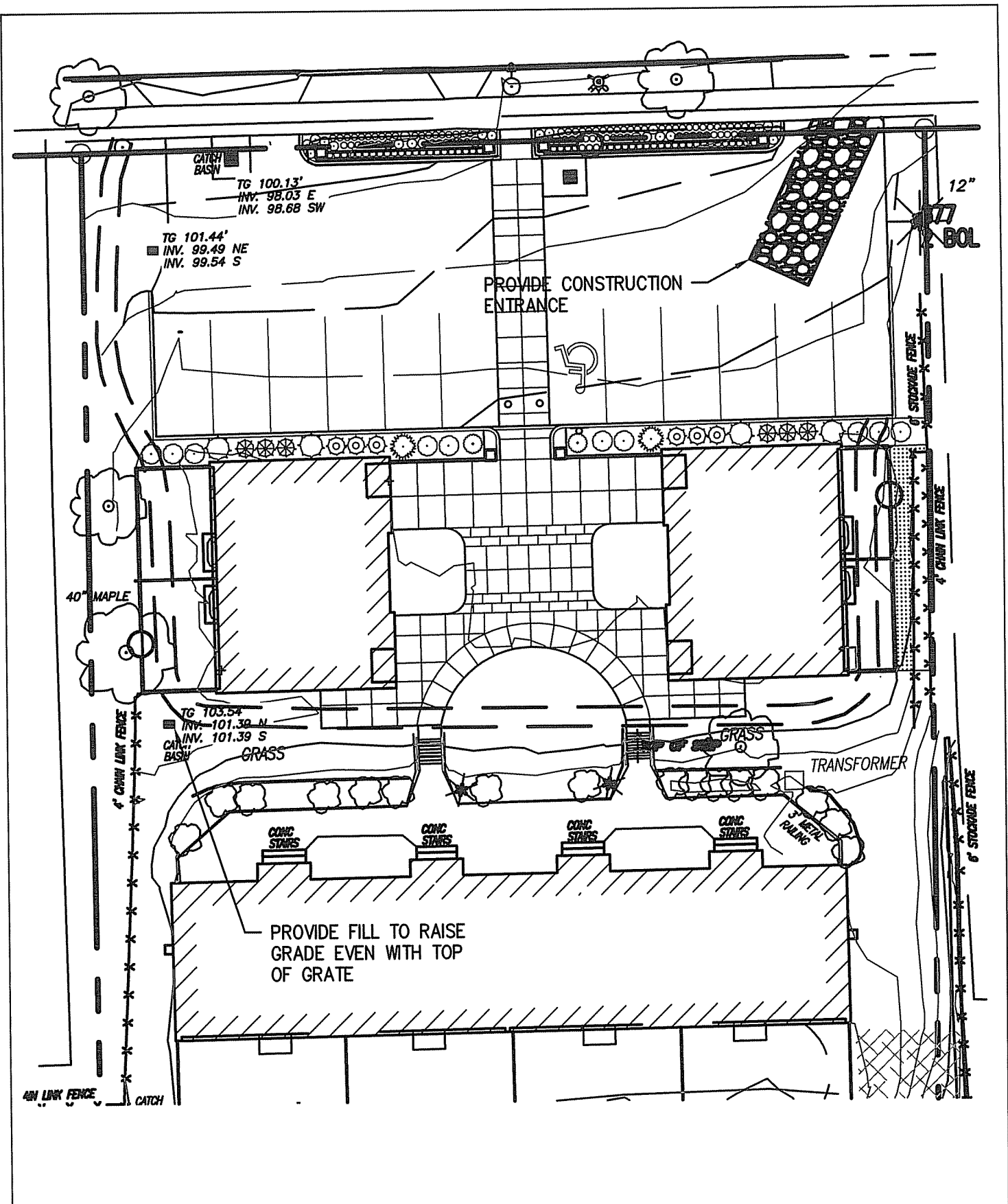


SITE LAYOUT POINTS
ROCHESTER HOUSING AUTHORITY
ATKINSON SITE IMPROVEMENTS
 37 ATKINSON STREET, ROCHESTER, NY

HUNT ENGINEERS/ARCHITECTS/SURVEYORS
 4 COMMERCIAL STREET
 SUITE 300, 3RD FLOOR
 ROCHESTER, N.Y. 14614
 585 - 327 - 7950
 FAX - 327 - 7949
 HORSEHEADS, NY ROCHESTER, NY TOWANDA, PA

CA-L1
 DATE : 8/7/2013
 PROJECT NO: 2285-016

Copyright © 2014



E&S AND GRADING ADDENDA
 ROCHESTER HOUSING AUTHORITY
 ATKINSON SITE IMPROVEMENTS
 37 ATKINSON STREET, ROCHESTER, NY

Copyright: 2014



4 COMMERCIAL STREET
 SUITE 300, 3RD FLOOR
 ROCHESTER, N.Y. 14614
 585 • 327 • 7950
 FAX • 327 • 7949

HORSEHEADS, NY ROCHESTER, NY TOWANDA, PA

CA-L2

DATE :
 8/7/2013
 PROJECT NO:
 2285-016